

Fairbanks Weavers & Spinners Guild

Mailing Address
PO Box 73152
Fairbanks, Alaska, 99707
Phone: 907-452-7737

Weaving Studio
Room 219, Lathrop Building
516 2nd Avenue
Fairbanks, Alaska 99701

Volume 31 Issue 4 October/November 2010

GUILD MEETINGS

November 3 Wed. 7pm DOUBLED PLEASURE –
DOUBLE THE LAYERS
Location: Weaving Studio Rm. 219, 516 2nd Ave.
Phone: 452-7737

DECEMBER 3 5:00 – 8:00 FIRST FRIDAY SALE
Location: EXPRESSIONS IN GLASS
1922 PEGER ROAD
Phone: 479-3923

DECEMBER Winter picnic will be in late JANUARY
JANUARY NO MEETING THIS MONTH

BOARD MEETINGS

Nov. 16 Monday, 5:30 pm
Dec. No Board Meeting
Jan. 24 Monday; 5:30 pm Jodi Gouwens
Location: 3796 Swenson Avenue.

SPINNING STUDY GROUP

November 13th, 2pm - 6pm Alice Stickney 479-3425
All spinners are welcome, and, if you are interested, call
Alice at 479-3425 for details and directions.

FIRST FRIDAY GUILD & MEMBER SALE December 3 5 - 8pm

FIRST FRIDAY at EXPRESSIONS IN GLASS

Don't forget that the Guild and it's members will be featured on December 3rd at EXPRESSIONS IN GLASS. The display area has large glass case counter and shelves for item display and room for demonstrations. We have green & red table coverings for the counters. We can leave our sales items for the month since this is the Holiday Season. The evening offers wine tasting too.

Warp that loom for tea towels, pot holders or hot pads, floor rugs, small lap blankets, handspun yarn. The Guild inventory at present includes our cards, soap bags, two triangular shawls from the fair and 4 alpaca scarves.

The commission fee will be 35% to cover credit card sales, cutting checks and a percentage will go to the Guild. If you leave your things for the month then the % goes to 40%.

Debbie Mathews would like to know how many artists will be participating for the newspaper ad. Please call 452-7737 with your name and items you might be selling.

**SOMETHING TO SELL OR
DONATE TO THE GUILD FOR OUR DECEMBER 3rd**

GUILD PROGRAMS

November 3 7pm Wed. **DOUBLE LAYERS**
Double your Fun WITH DOUBLE WEAVE
ART 227 Woven Fabric this semester is on **DOUBLE WEAVE** using different threading patterns to accomplish the double weave structure on 4 and 8 shaft looms to create layered fabric.

The history and use of double weave in triple layers has been found in samples of fabric that have survived from the Han Dynasty (206 B C – 220 A D) The use of polychrome double and triple weave was well developed and known before the latter half of the Chou Dynasty (800 to 249 B C). India has a long tradition of double weave as well as Persia.

Knowledge of double weave traveled north to Russia and Scandinavia and throughout Europe. In the 15 & 16th C. the weave was beautiful and ornamental and highly respected in the weaving sheds of the noblemen, wealthy merchants and landowners for household textiles, wall hangings and coverlets woven with intricate designs. Once it became 'folk art', the designs became static and conventionalized.

The fabric became important in the northern climates for the double layer added warmth and insulation in clothing and blankets used in the drafty cold homes.

The increased use of the drawloom, the double woven fabric took on a geometric style of repeats and lost the design spontaneity of earlier fabrics. In the United States the use of long eyed heddles allowed for geometric and symmetrical, 4 to 8 block patterns. Jacquard looms now weave patterned double weave with ease. (*Monograph One -The DOUBLE WEAVE -Plain & Patterned by Harriet Tidball, 1960*)

We will present the Double woven structure on multiple looms from rigid heddle, card, inkle, 4 & 8 shaft looms. Please bring any double woven samples to share. Check out the double weave threading to try on your next warp.

**DECEMBER WINTER PICNIC POSTPONED
UNTIL LATE JANUARY
JANUARY MEETING CANCELLED
NEXT NEWSLETTER IN JANUARY 2011**

Presidents Letter October 2010

It's that time of year when the snow is here again that we need to start thinking about the holiday projects we want to do. Maybe we even need to finish some of those nagging projects from the previous year. (or was it the year before that!)

So now is time to get out your spinning, weaving, needle felting, bobbin lacemaking, knitting, etc. and set aside some time to help yourself by completing those wonderful fiber gifts for friends, family and yourself.

Don't forget to put on a little extra warp or buy a little extra yarn to make a project that the Guild can sell during our First Friday opening in December.

Got a little extra time someday - Penny could use some help cutting out more of the fronts of the cards we sell as fundraisers.

Jodi Gouwens, President

MEMBERS IN THE NEWS

New Members joining the guild are **JASMINE 'JEY' JOHNSON, SUE HILLS, MIKKI GRIFFIN, PAM GAJDOS, SHAUN BROWN** from North Pole and **CAT WHITNEY** from Turning Light Farms on Chena Hot Springs Road.

Rejoining members **LAUREL HERBECK, CHRIS PELTZER, KATHY BUCKLEY, PATRICA & GARY POLLARD** from Valley Center, California, with plans to move to Alaska some day and want to stay in touch.

KATE HEDSTOM and husband Rob were featured in the latest KUAC Newsletter. Kate's Mom Tui Hedstrom was here in September and we had the pleasure of seeing her colorful double woven samples.

GAYLE HAZEN & CORLIS TAYLOR are all moved into their new studio with store front windows on Gaffney Street.

JANE GREGORY is recovering from shoulder surgery and is back waving to everyone.

JODI GOUWENS is back from her short trip to the Seattle Area to visit friends making baskets for the bazaars. Look for **ELIZABETH KEECH, CHRISTINE DICURTI, BECKY HAMMOND, JODI GOUWENS, MOXIE PENDER & others** selling at the bazaars.

FOR YOUR BAZAAR PLEASURE

The following Bazaar's

- Nov. 6/7 10-4 UAF Women's Bazaar, Wood Ctr
- Nov. 13/14 Holiday Market Place at Carlson Center
- Nov. 20 Sat 9-5 Ryan Middle Sch & Quota Club Bazaar
- Nov. 27/28 Sat/Sun 10-5 Pioneer Park Holiday Bazaar
- Nov 27/28 Sat/Sun Ken Kunkle Center Goldstream
- Dec. 3 Fri. 5-8 Expressions in Glass
- Dec. 4 Sat 10-4pm Tanana Valley Farmer's Market West Valley H.S. on Geist Rd.

RAG RUG STRIPS – READY TO WEAVE

Anyone interested in prepared rag strips sewn together in either mixed random or solid color balls? Please call me if interested, 452-7737

THANK YOU'S TO ALL

Many THANKS to everyone who helped with the NATIONAL SPINNING & WEAVING DEMO'S at Barnes & Noble on October 10th. We had spinners, weavers, knitters demonstrating and talking with lots of interested folks. The weather cooperated by not being too slippery or too cold.

Thanks to Jodi Gouwens for taking our Guild Gift inventory to her bazaar outings. Every little bit helps.

THE ART SCENE

**FAIRBANKS ARTS ASSOCIATION
BEAR GALLERY Exhibits & DEADLINES**

PORTFOLIO REVIEW FOR YEAR 2012

Deadline: October 31st, 2010

Submission info on FAA's website

Deadline for the 3 R's exhibit is 5pm, October 31th
3R's exhibit 'ReUsed & ReAssembled, ReCycled' is a non juried exhibition but NEW MEDIA is Juried.

Nov 5 – 27 Craig Cheledinas & New Media & 3R's
Nov 5 & 6 5-8pm FAIRBANKS POTTERS GUILD & OTHERS at the Morris Thompson Center

Dec 3 – 31 RARIFIED LIGHT - Photography

Jan 7 - 29 All Alaska Juried Exhibition

Feb 4 – 26 Patterns of Influence –

Deadline for Juried exhibit – January 30

For prospectus for these exhibitions: fairbanksarts.org

STUDY GROUPS? CHALLENGES?

Anyone interested in study groups??? Several of my weaving students were interested in a study group on Tapestry so on Saturdays (1:00pm to 3:30pm) for the month of November I will help anyone interested in warping up for tapestry on their frame, rigid heddle, inkle or bead loom or do Navajo warping for a small weaving.

Anyone interested in starting or leading a study group? Please let us know. I know we are all SO BUSY including myself but after reviewing all of my old 'Weavers' and Handwoven magazines looking for double weave articles, I realized how lazy I have been and how much yarn I have on hand that is not going away, so I'm all inspired again, making warps and warping every loom in the studio. We are trying to generate programs or study groups that might get more guild members back on their looms or interested in new projects. Since we have a number of INKLE LOOMS here in the Studio, I am interested in knowing more about the pick-up patterns and wondered if anyone could help out?

I would also like to challenge all the weavers to warp up for a TEA TOWEL CHALLENGE. I never make anything like that but I am now in need for some new hand towels. So if anyone wants to participate, weave two (one for yourself and another for the Guild to sell at ART EXPO in March. Any help or questions, call the Studio 452-7737 and sign up for the challenge. Learn a new structure. A beginning student from last semester wove off 6 yards of huck tea towels. What a great project.

JOIN THE CHALLENGE OR LEAD A STUDY GROUP

WORKSHOP UPDATE

NOV 14 Sunday 1- 4pm MITTEN WORKSHOP

Learn how to make mittens from old felted sweaters or weave off a length of fabric to felt, cut and sew for the warmest mittens. Warp available at the Studio.

Location: Weaving Studio
 Workshop Fee: \$25 includes pattern & leather.
 Must know how to sew.
 Register: Call 457-4124 or 452-7737

WEAVE WARP FOR MITTENS

Another year another opportunity to use up that Lumpy Bumpy type of handspun yarn Clean out those yarn baskets, use up that old thick thin stuff that you made way back when. My 'warping fairy' Anita Magee threaded my loom for DEFLECTED DOUBLE WEAVE which is great for mittens. The warp is red, yellow, orange, with blue, green & purple.

You do need to sign up for the weaving time (3 -4 hours) The Studio is open Tues/Thurs evenings from 5:30pm until 9pm. You do not need to know how to weave – so start house cleaning and find that stuff. Call 452-7737 or 457-4124 FEE for warp: \$10

NOVEMBER 7 Sat 1 -3:30pm Tapestry & RIGID HEDDLE & INKLE LOOM WARPING

The Guild has a number of RIGID HEDDLE LOOMS available for small projects. **END OF YEAR RESOLUTION is to warp all the looms so we are prepared for A NEW YEAR of weaving.** If you want to help or need help in warping your tapestry frame, inkle or rigid heddle loom, please come down to the Weaving Studio. You can take a Rigid Heddle home to try out. How nice it would be to warp all the looms in the North Star Borough so that your loom is not NAKED and COLD all winter. It would be a big job but the 'WARPING FAIRY' will help, just call. The **EASY WARPING INSTRUCTIONS** are on the website for you to download in color and do your own warping. Any questions, please call 452-7737 or 378-3324, or 457-4124

JODI GOUWENS BASKET CLASSES

***YOU PICK THE DATE AND THE BASKET ***

For a minimum of 4 people and 2 weeks notice, you pick the basket and decide the day of the week! Weekdays are also available.

HOURS: 9am - 4:30 pm
 FEE: \$45 + \$2 to stain if you wish
 TO REGISTER call 474-9144 or
 Location: Instructor's home off University Avenue



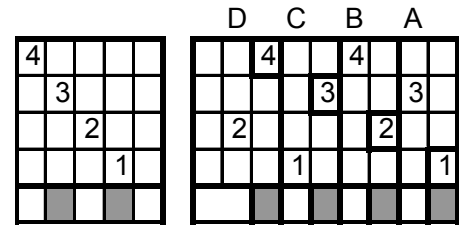
Overshot DW mat in process by weaver Lainey Oates

6 Block D W runner by weaver Terry Roberts

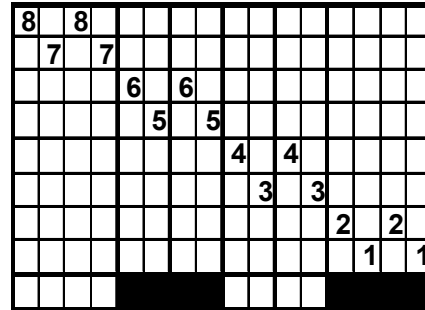
DOUBLE WEAVE THREADINGS

Try out any of the following threading for double weave fabric. Remember the sett is twice that of plain weave.

DOUBLE WEAVE & SHADOW



DEFLECTED DOUBLE WEAVE



Handwoven Jan/Feb 2007, Weavers School van der Hoogt, pg 72-73

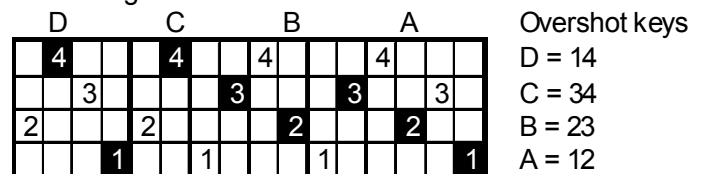
RESOURCES:

HANDWOVEN, January/February 2002, Entire issue is devoted to double weave, pages 14, 27 –31, Jennifer Moore's article on 4 shaft DW and 8 shaft DW.
 DOUBLE WEAVE ON 4 & 8 by Ursina Arn-Grischott
 LOOM CONTROLLED DOUBLE WEAVE-Paul O'Conner

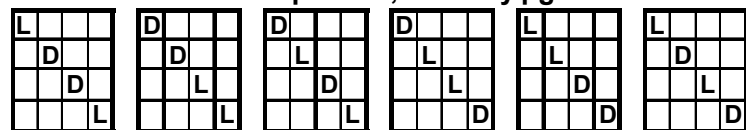
EPI	Yarn size	Yardage	EPI single layer
48 epi	10/2 Cotton (4100 yd/lb)		24 epi
40 epi	2/22 Cottolin (3172 yd/lb)		20 epi
32 epi	5/2 Cotton (2100 yd/lb)	16 epi	
24 epi	3/2 Cotton (1260 yd/lb)		12epi
20 epi	8/4 Carpet warp (1600 vd/lb)		10epi

Double Weave threading for Overshot blocks

Threading dks & lts on even or odds

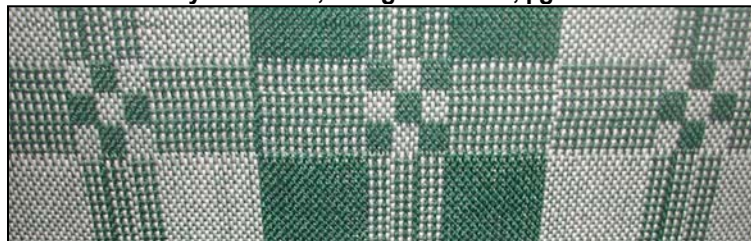


Handwoven March/April 2005, Keasbey pg 60



6 dk/lts threadings for 6 blocks of double weave

Handwoven May/June 1985, Scorgie & Martin, pg 38



HOLIDAY GIFTS

Looms for Sale

36" Harrisville Model T 4 Shaft floor
Warping board, 2 shuttles, 2 reeds, spool
winder & 14 spools & other weaving
accessories

Kanza Keill, 457-2423
\$950

4 shaft Table loom with stand
Some Books, shuttles, warping board
\$400 Call the Studio

Rigid Heddle Loom
On a Stand

20" wide, 10 epi
Brand New \$400

Call the Studio, 452-7737

36" LeClere 4 shaft Loom
Bench, warping board,
bobbins, reeds
\$1200

907-345-0828 nancyp@AK.net

4 Shaft Table Loom
With shuttles, bobbins & reeds
\$450

Vicki Robbe, 457-6007

Complete Weaving Studio for Sale

59 inch Liisa model Finnish Toika Countermarch loom with
bench, 8 harnesses, 8 treadles, w/complete instruction booklets
Two reeds: 6 & 10 dent per inch Warping mill wooden
Ball winder and wooden swift Misc. shuttles, bobbins, a
bobbin winder, raddles

Small LeClerc 16 inch table loom Misc. linen yarn
(Value over \$5000.00) ALL FOR \$2500.00 p/u Homer
Photos and info please call Paula Dickey 907-235-7953 or

BDickey449@aol.com

48" AVL 16 Shaft Production Dobby Loom, For Sale: \$3500
includes the following: *Kiln-dried maple construction Mechanical doobby
head with extra bars and pegs Overhead beater (can be adapted
for fly-shuttle) two plain back beams with warping cloth*

*cloth advance and storage system automatic warp tensioning
polyester heddles built-in bench*

AVL manual for assembling & weaving on this loom Making
way for a new loom, sacrificing this one for a very good price.

Excellent condition, great loom for multi-harness production
weaving and yardage. Call Laurel Herbeck at 474-0919 or email
upstream@gci.net for details or to make an appt. to see the
loom. Can be picked up or you pay to crate & ship. Prefer not to
ship outside of Alaska.



FINAL PROJECT BY MOXIE PENDER - 7' Table runner Advancing twill

